

*Atlas Copco*



**AIRCUBE™**

**Containerized  
compressor rooms**



# The ready-to-go compressed air system, where and when you need it

Do you need to ramp up production right now?

Do you lack the space for an indoor compressor room?

Are you tired of dealing with the red tape and building permits required for an indoor compressor room?

Do you need top-quality compressed air in a remote location?

## The AIRCUBE™ has all the answers.

Atlas Copco's containerized compressor room delivers an instant solution to your most pressing and toughest compressed air needs. It's a complete air system built into a standard shipping container, ready for operation upon delivery. Every AIRCUBE consists of proven, certified components, assembled to your specific requirements.



### Total flexibility

We know a one-size-fits-all solution would not work for you. That is why your AIRCUBE™ will be one-of-a-kind. First you choose from a wide range of our compressors, dryers and other compressed air equipment. Then you can select as many of our smart add-ons as you need to customize your containerized compressor room.



### Proven Atlas Copco quality

Your AIRCUBE will contain the top-quality Atlas Copco products you know and trust. That also means no compatibility and integration problems with third-party equipment. To ensure you don't run into any performance or compliance issues, we only use compressed air equipment that has been thoroughly tested and that is CE-certified.



### A complete, plug-and-play solution

The AIRCUBE is the quickest solution to meet your compressed air demands. You get a complete compressed air system that is specifically built to be ready for operation on Day One.



### Outstanding reliability

Reliability is crucial for containerized compressor rooms, many of which have to operate in tough climates. That is why your AIRCUBE is designed to withstand the harshest temperatures, from -40°C to +45°C (-50°C to +50°C upon demand).



### Premium efficiency

Are you looking for an efficient and sustainable compressed air system with a low total cost of ownership? Then we will gladly install compressors and dryers featuring Atlas Copco's unrivaled variable speed drive technology in your AIRCUBE.

# Advanced air system performance in one robust package

## ISO sea container housing

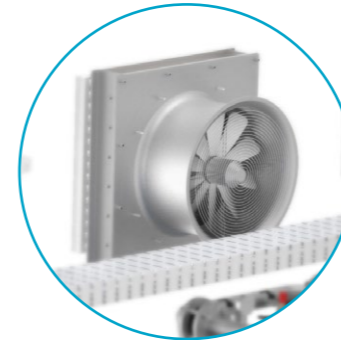
Depending on the equipment you choose, your AIRCUBE™ comes in a 20 or 40-foot ISO sea container.

## Built for extreme conditions

- A standard AIRCUBE can function reliably in temperatures from 0°C to 45°C.
- As an option, we can also design it to withstand very extreme ambient conditions from -40°C to +45°C (-50°C to +50°C upon demand).

## Lighting as standard

Every AIRCUBE™ features a built-in lighting system, including an emergency light that will guide the operator during a power outage.



## AIRnet piping

Atlas Copco's patented AIRnet system (made with non-corrosive aluminum pipes) connects the air network inside the container. Leak-proof connections prevent flow and energy losses. Stainless steel AIRnet piping is available as an option.



## Effective ventilation

Each AIRCUBE comes with a complete ventilation system, including exhaust air ducts and ventilation fans.

## Remote monitoring system

As an option, you can choose a remote monitoring system that allows you to optimize the performance of your AIRCUBE.

## Easy access

- Dual double doors allow for easy maintenance access.
- An additional safety door is available for personnel entry and exit. As a safety precaution, it can be opened from the inside even if it is locked from the outside.



## VSD efficiency

Choose variable speed drive compressors and dryers for lower operating costs and a greener production.

## Proven quality

All equipment features Atlas Copco quality:

- No compatibility problems
- Single source of contact
- Certified equipment

## Smart add-ons

Select from many smart add-ons to customize your AIRCUBE, including:

- Flow transmitter
- Power meter
- Fire alert system

# Selection and customization in 3 easy steps

The modular approach of the AIRCUBE™ makes assembling your containerized compressor room as easy as 1-2-3.

## STEP 1

Pick one or two of our industry-leading compressors to form the heart of your air system. You can choose from a wide range of fixed-speed or variable speed drive models.

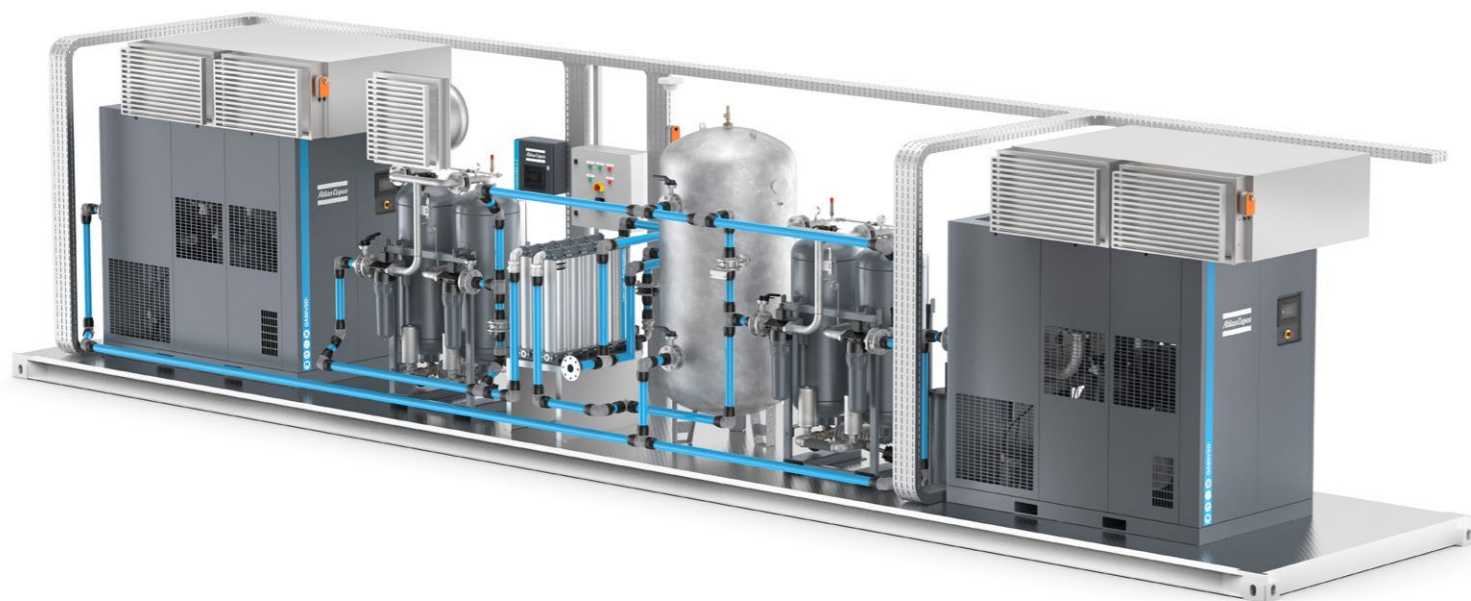
## STEP 2

Mix and match many of the Atlas Copco compressed air treatment equipment you already know, use and trust, such as dryers, air receivers and filters.

## STEP 3

Choose the options that make your AIRCUBE the perfect solution for your specific needs.

That is all we need to build your AIRCUBE. Because all of the components are pre-tested and certified, you won't have to wait long for your one-of-a-kind, plug-and-play containerized compressor room.



# The freedom to assemble your own AIRCUBE™

To ensure that your AIRCUBE is the perfect solution for your needs, choose from a wide selection of standard equipment as well as specialized options.

## Choose from:

- 2 compressors (single/double train configuration)
  - GA 11+ to GA 90 fixed-speed compressors
  - GA 7 VSD+ to GA 110 VSD+ variable speed drive compressors
- 2 dryers (single/double train configuration)
  - Up to FD 310 refrigerant dryers
  - CD 45+ to CD 300+ heatless desiccant dryers
- Wet air receiver
- Dry air receiver



## Included as standard:

- 20ft/40ft ISO sea container
- Access for maintenance (2 double doors + 1 single door)
- Climatic conditions (0°C to +45°C)
- Ventilation
- Aluminum AIRnet piping
- Main power distribution panel (single tie-in)
- Power isolation switch
- Lighting
- CE-certification



## Available as options:

- Stainless steel AIRnet piping
- Special paint
- Extra service doors
- Modbus/ethernet communication interface
- Fire alert system
- Witness FAT
- Insulation of the container
- Extreme conditions kit 1 (-10°C to +45°C)
- Extreme conditions kit 2 (-40°C to +40°C)
- Aluminum tear plate flooring
- CSC inspection of container
- Cyclone filtration for dusty environments
- Flow meter to analyze flow demand
- Power meter for online energy monitoring
- EQ controller
- Customer decals
- ISO8573 filtration class add-ons
- Dryer and receiver bypass



