

WALK THE LINE

Your strategic partner identifying potentials for cost savings & quality improvements

Atlas Copco



OUR SERVICE – YOUR BENEFITS

A careful examination of the assembly line process will likely reveal several opportunities to increase line speed and output, improve quality of the final product and reduce the risk of costly quality related re-calls or warranties by making it right the first time. Our specialists will walk through your line, observe your processes and ask relevant questions. Depending on your given objectives, we provide meaningful suggestions on how to improve your situation shortly after evaluating your current situation.

The image shows a 'WALK THE LINE' application sheet from Atlas Copco. The form is titled 'ATLAS COPCO WALK THE LINE APPLICATION SHEET' and contains several sections for data collection: 'INFORMATIONEN DER ANWENDUNG' (Application Information), 'EINGESPARTES WERKZEUGE' (Saved Tools), 'EINGESPARTES ZUBEHÖR' (Saved Accessories), 'PROZESSSITUATION' (Process Situation), and 'Weitere Dienstleistungen' (Further Services). A circular diagram with 'Effizienz' (Efficiency) at the center and 'Produktion' (Production) at the bottom is overlaid on the form.



Walking Your Line

- Observing your processes
- Interviewing operators
- Identifying issues
- Widen the scope to the whole process



Evaluating the Results

- Uncovering potentials for cost savings
- Improving your efficiency
- Standardize your processes
- Improve your quality



Presenting the Results

- Providing an evaluation of your line regarding standards, efficiency, quality output & processes
- Demonstrating your potential

Experience – Expertise – Knowledge



EXPERTISE & EXPERIENCE

With our experience and expertise in the area of assembly technology, Atlas Copco identifies ways to:

- Improve your assembly operations
- Increase your productivity and quality
- Optimize your work environment
- Reduce your assembly process costs
- Lower your life-cycle costs
- Reduce your downtimes

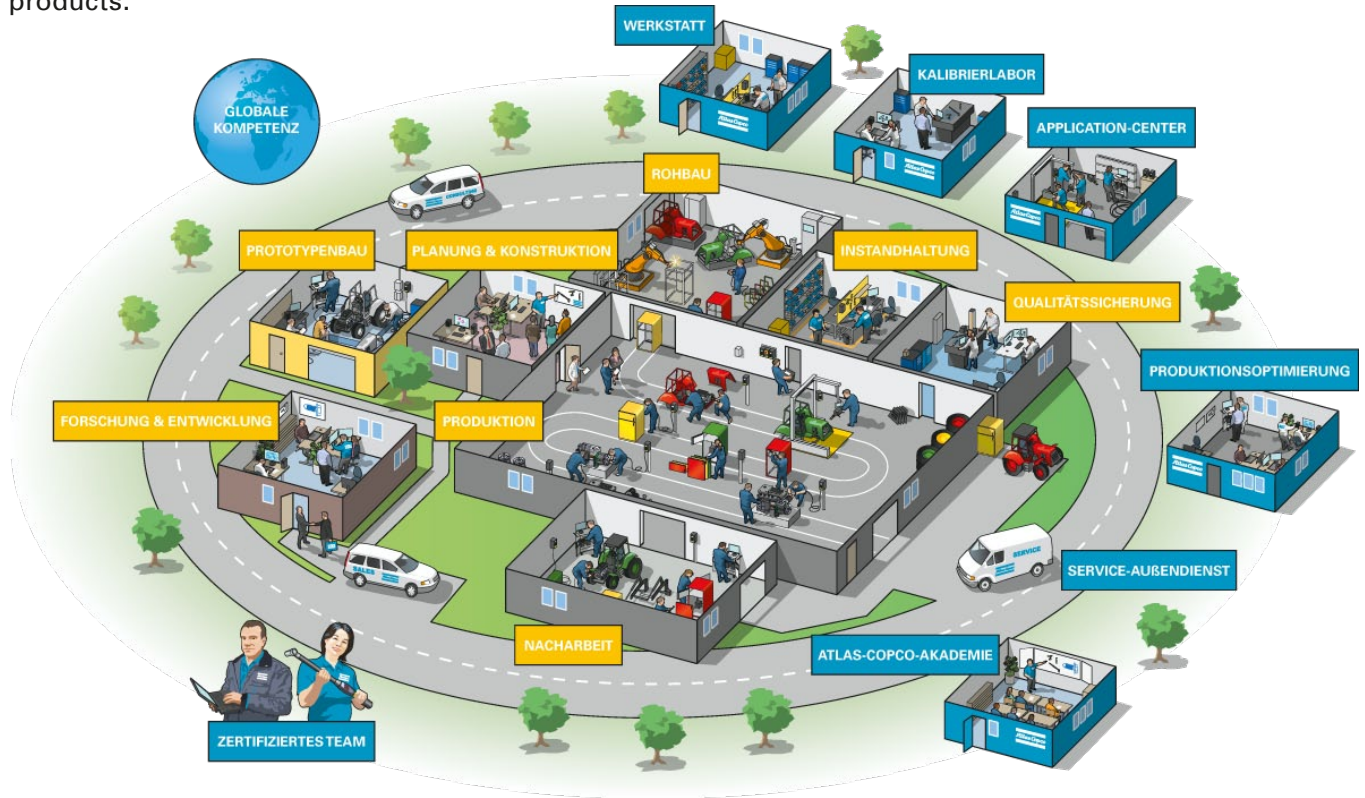


From tightening knowledge, tightening tools, material handling, software, material removal and service, no other manufacturer offers the range of assembly equipment or expertise of Atlas Copco.

Let us apply our wealth of experience in assembly manufacturing operations across the globe to help save you money.

ATLAS COPCO – YOUR STRATEGIC PARTNER

Atlas Copco Tools and Assembly Systems focuses on being your strategic partner, serving more than 90 countries world-wide. We provide solutions that improve your assembly process by combining high quality tool solutions and supreme services and knowledge, aiming to optimize your production and products.



**COMMITTED TO
SUSTAINABLE PRODUCTIVITY**

Atlas Copco